



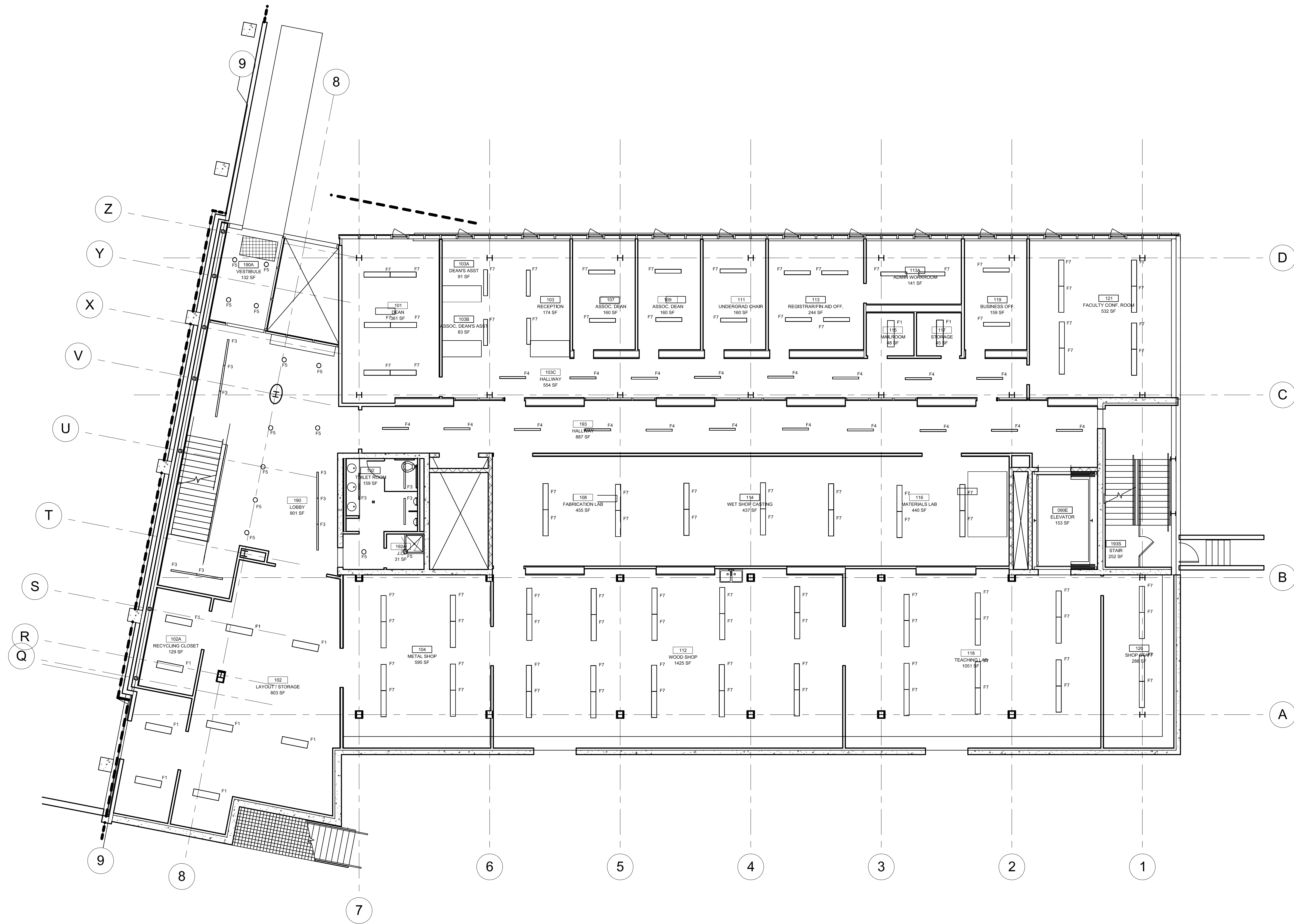
Thesis 2007

Pennsylvania State University
State College, PA 06802

KHA N DANG, LC INTERN
ARCHITECTURAL ENGINEERING
LIGHTING | ELECTRICAL option

T: 267 229 9370
E: knd107@gmail.com
W: www.arche.psu.edu/thesis/cportfolio2007/
portfolios/knd107

C: Dr. Richard Mistrick
C2: Ted Dannert



Symbol	Label	Qty	Color/Number	Description	Notes	FR	Lumens	LF	Watts
[Symbol]	F1	11	IPV-2-54TSHO	HEAVY DUTY INDUSTRIAL 2' X 4' X 2' COMP. TRAC MOUNT. SLOTTED REFLECTOR.	TWO 36-WATT T5 HIGH-PRESSURE SODIUM FLUORESCENT RATED AND LAMP. POLYMER-ON-STEEL MOUNTING.	170,000 LUMENS	4,650	5.70	122.6
[Symbol]	F2	0	ESOR6-04TSHO	2' X 4' X 2' COMP. ALUMINUM MOUNTING. PUBLIC CORRIDOR.	24754KSHHO RATED @ 5000 LUMENS	4950x254mm	5000	5.61	125.4
[Symbol]	F3	11	LNW60-04TSHO	2' X 4' X 2' COMP. RECESSED WALL MOUNT. WHITE PAINTED.	24754KSHHO RATED @ 5000 LUMENS	4950x254mm	4650	5.61	99.9
[Symbol]	F4	19	LSR60-04TSHO	2' X 4' X 2' COMP. DIRECT LIGHT WITH WHITE PAINTED.	24754KSHHO RATED @ 5000 LUMENS	152954mm	5000	5.61	99.1
[Symbol]	F5	13	LOF-8TSHO	1' X 8' X 2' COMP. REFLECTOR. WHITE HOUSING. LIGHT FIXTURE. CEILING MOUNT. RECESSED HOOD.	ONE 36-WATT COMPACT FLUORESCENT TUBE. HORIZONTAL POS.	171,140 LUMENS	2,400	5.70	34
[Symbol]	F6	0	MSGHST 2	FLUORESCENT HOUSING. TUBE LAMP. 8-WATT. T8HO. WIDE DISTRIBUTION. WHITE HOUSING. CEILING MOUNT. RECESSED HOOD.	TWO 36-WATT T5 HOUSING. TUBE LAMP. RATED AND LAMP. (SEE LAMP)	491390mm	4,650	5.70	104
[Symbol]	F7	72	ESAMF-04TSHO	2' X 4' X 2' COMP. 2' X 4' X 2' COMP. ALUMINUM MOUNTING. LIGHT WHITE.	24754KSHHO RATED @ 5000 LUMENS	4950x254mm	6000	5.75	125.5
[Symbol]	F8	16	ENW60-04TSHO	2' X 4' X 2' COMP. DIRECT RECESSED LIGHT WHITE.	24754KSHHO RATED @ 5000 LUMENS EACH	4950x254mm	5000	5.75	125.4

Name	# Luminaires	Total Watts	Area	Density
101 Dean Office	6	723.0 W	372.1 SF	1.9 W/SF
101 Metal Shop	6	964.8 W	596.0 SF	1.6 W/SF
102 Book Storage	5	615.0 W	854.0 SF	0.8 W/SF
102A Recycle Closet	2	246.0 W	126.3 SF	1.9 W/SF
102B Layout Storage	2	246.0 W	166.1 SF	1.4 W/SF
102C Recycle Storage 2	2	246.0 W	88.0 SF	2.8 W/SF
102D Recycle Storage 3	2	246.0 W	160.2 SF	1.5 W/SF
102E Recycle Storage 4	2	246.0 W	160.2 SF	1.5 W/SF
102F Recycle Storage 5	2	246.0 W	160.2 SF	1.5 W/SF
102G Recycle Storage 6	2	246.0 W	160.2 SF	1.5 W/SF
102H Recycle Storage 7	2	246.0 W	160.2 SF	1.5 W/SF
102I Recycle Storage 8	2	246.0 W	160.2 SF	1.5 W/SF
102J Recycle Storage 9	2	246.0 W	160.2 SF	1.5 W/SF
102K Recycle Storage 10	2	246.0 W	160.2 SF	1.5 W/SF
102L Recycle Storage 11	2	246.0 W	160.2 SF	1.5 W/SF
102M Recycle Storage 12	2	246.0 W	160.2 SF	1.5 W/SF
102N Recycle Storage 13	2	246.0 W	160.2 SF	1.5 W/SF
102O Recycle Storage 14	2	246.0 W	160.2 SF	1.5 W/SF
102P Recycle Storage 15	2	246.0 W	160.2 SF	1.5 W/SF
102Q Recycle Storage 16	2	246.0 W	160.2 SF	1.5 W/SF
102R Recycle Storage 17	2	246.0 W	160.2 SF	1.5 W/SF
102S Recycle Storage 18	2	246.0 W	160.2 SF	1.5 W/SF
102T Recycle Storage 19	2	246.0 W	160.2 SF	1.5 W/SF
102U Recycle Storage 20	2	246.0 W	160.2 SF	1.5 W/SF
102V Recycle Storage 21	2	246.0 W	160.2 SF	1.5 W/SF
102W Recycle Storage 22	2	246.0 W	160.2 SF	1.5 W/SF
102X Recycle Storage 23	2	246.0 W	160.2 SF	1.5 W/SF
102Y Recycle Storage 24	2	246.0 W	160.2 SF	1.5 W/SF
102Z Recycle Storage 25	2	246.0 W	160.2 SF	1.5 W/SF
102AA Recycle Storage 26	2	246.0 W	160.2 SF	1.5 W/SF
102AB Recycle Storage 27	2	246.0 W	160.2 SF	1.5 W/SF
102AC Recycle Storage 28	2	246.0 W	160.2 SF	1.5 W/SF
102AD Recycle Storage 29	2	246.0 W	160.2 SF	1.5 W/SF
102AE Recycle Storage 30	2	246.0 W	160.2 SF	1.5 W/SF
102AF Recycle Storage 31	2	246.0 W	160.2 SF	1.5 W/SF
102AG Recycle Storage 32	2	246.0 W	160.2 SF	1.5 W/SF
102AH Recycle Storage 33	2	246.0 W	160.2 SF	1.5 W/SF
102AI Recycle Storage 34	2	246.0 W	160.2 SF	1.5 W/SF
102AJ Recycle Storage 35	2	246.0 W	160.2 SF	1.5 W/SF
102AK Recycle Storage 36	2	246.0 W	160.2 SF	1.5 W/SF
102AL Recycle Storage 37	2	246.0 W	160.2 SF	1.5 W/SF
102AM Recycle Storage 38	2	246.0 W	160.2 SF	1.5 W/SF
102AN Recycle Storage 39	2	246.0 W	160.2 SF	1.5 W/SF
102AO Recycle Storage 40	2	246.0 W	160.2 SF	1.5 W/SF
102AP Recycle Storage 41	2	246.0 W	160.2 SF	1.5 W/SF
102AQ Recycle Storage 42	2	246.0 W	160.2 SF	1.5 W/SF
102AR Recycle Storage 43	2	246.0 W	160.2 SF	1.5 W/SF
102AS Recycle Storage 44	2	246.0 W	160.2 SF	1.5 W/SF
102AT Recycle Storage 45	2	246.0 W	160.2 SF	1.5 W/SF
102AU Recycle Storage 46	2	246.0 W	160.2 SF	1.5 W/SF
102AV Recycle Storage 47	2	246.0 W	160.2 SF	1.5 W/SF
102AW Recycle Storage 48	2	246.0 W	160.2 SF	1.5 W/SF
102AX Recycle Storage 49	2	246.0 W	160.2 SF	1.5 W/SF
102AY Recycle Storage 50	2	246.0 W	160.2 SF	1.5 W/SF
102AZ Recycle Storage 51	2	246.0 W	160.2 SF	1.5 W/SF
102BA Recycle Storage 52	2	246.0 W	160.2 SF	1.5 W/SF
102BB Recycle Storage 53	2	246.0 W	160.2 SF	1.5 W/SF
102BC Recycle Storage 54	2	246.0 W	160.2 SF	1.5 W/SF
102BD Recycle Storage 55	2	246.0 W	160.2 SF	1.5 W/SF
102BE Recycle Storage 56	2	246.0 W	160.2 SF	1.5 W/SF
102BF Recycle Storage 57	2	246.0 W	160.2 SF	1.5 W/SF
102BG Recycle Storage 58	2	246.0 W	160.2 SF	1.5 W/SF
102BH Recycle Storage 59	2	246.0 W	160.2 SF	1.5 W/SF
102BI Recycle Storage 60	2	246.0 W	160.2 SF	1.5 W/SF
102BJ Recycle Storage 61	2	246.0 W	160.2 SF	1.5 W/SF
102BK Recycle Storage 62	2	246.0 W	160.2 SF	1.5 W/SF
102BL Recycle Storage 63	2	246.0 W	160.2 SF	1.5 W/SF
102BM Recycle Storage 64	2	246.0 W	160.2 SF	1.5 W/SF
102BN Recycle Storage 65	2	246.0 W	160.2 SF	1.5 W/SF
102BO Recycle Storage 66	2	246.0 W	160.2 SF	1.5 W/SF
102BP Recycle Storage 67	2	246.0 W	160.2 SF	1.5 W/SF
102BQ Recycle Storage 68	2	246.0 W	160.2 SF	1.5 W/SF
102BR Recycle Storage 69	2	246.0 W	160.2 SF	1.5 W/SF
102BS Recycle Storage 70	2	246.0 W	160.2 SF	1.5 W/SF
102BT Recycle Storage 71	2	246.0 W	160.2 SF	1.5 W/SF
102BU Recycle Storage 72	2	246.0 W	160.2 SF	1.5 W/SF
102BV Recycle Storage 73	2	246.0 W	160.2 SF	1.5 W/SF
102BW Recycle Storage 74	2	246.0 W	160.2 SF	1.5 W/SF
102BX Recycle Storage 75	2	246.0 W	160.2 SF	1.5 W/SF
102BY Recycle Storage 76	2	246.0 W	160.2 SF	1.5 W/SF
102BZ Recycle Storage 77	2	246.0 W	160.2 SF	1.5 W/SF
102CA Recycle Storage 78	2	246.0 W	160.2 SF	1.5 W/SF
102CB Recycle Storage 79	2	246.0 W	160.2 SF	1.5 W/SF
102CC Recycle Storage 80	2	246.0 W	160.2 SF	1.5 W/SF
102CD Recycle Storage 81	2	246.0 W	160.2 SF	1.5 W/SF
102CE Recycle Storage 82	2	246.0 W	160.2 SF	1.5 W/SF
102CF Recycle Storage 83	2	246.0 W	160.2 SF	1.5 W/SF
102CG Recycle Storage 84	2	246.0 W	160.2 SF	1.5 W/SF
102CH Recycle Storage 85	2	246.0 W	160.2 SF	1.5 W/SF
102CI Recycle Storage 86	2	246.0 W	160.2 SF	1.5 W/SF
102CJ Recycle Storage 87	2	246.0 W	160.2 SF	1.5 W/SF
102CK Recycle Storage 88	2	246.0 W	160.2 SF	1.5 W/SF
102CL Recycle Storage 89	2	246.0 W	160.2 SF	1.5 W/SF
102CM Recycle Storage 90	2	246.0 W	160.2 SF	1.5 W/SF
102CN Recycle Storage 91	2	246.0 W	160.2 SF	1.5 W/SF
102CO Recycle Storage 92	2	246.0 W	160.2 SF	1.5 W/SF
102CP Recycle Storage 93	2	246.0 W	160.2 SF	1.5 W/SF
102CQ Recycle Storage 94	2	246.0 W	160.2 SF	1.5 W/SF
102CR Recycle Storage 95	2	246.0 W	160.2 SF	1.5 W/SF
102CS Recycle Storage 96	2	246.0 W	160.2 SF	1.5 W/SF
102CT Recycle Storage 97	2	246.0 W	160.2 SF	1.5 W/SF
102CU Recycle Storage 98	2	246.0 W	160.2 SF	1.5 W/SF
102CV Recycle Storage 99	2	246.0 W	160.2 SF	1.5 W/SF
102CW Recycle Storage 100	2	246.0 W	160.2 SF	1.5 W/SF
102CX Recycle Storage 101	2	246.0 W	160.2 SF	1.5 W/SF
102CY Recycle Storage 102	2	246.0 W	160.2 SF	1.5 W/SF
102CZ Recycle Storage 103	2	246.0 W	160.2 SF	1.5 W/SF
102DA Recycle Storage 104	2	246.0 W	160.2 SF	1.5 W/SF
102DB Recycle Storage 105	2	246.0 W	160.2 SF	1.5 W/SF
102DC Recycle Storage 106	2	246.0 W	160.2 SF	1.5 W/SF
102DD Recycle Storage 107	2	246.0 W	160.2 SF	1.5 W/SF
102DE Recycle Storage 108	2	246.0 W	160.2 SF	1.5 W/SF
102DE	11	653.1 W	875.0 SF	0.7 W/SF

Description	Symbol	Avg	Max	Min	Max/Min	Avg/Min
101 Dean Office	+	45.1%	60.8%	4.4%	13.8:1	10.2:1
101 Metal Shop	+	44.8%	61.4%	0.0%	N/A	N/A
102 Book Storage	+	35.7%	37.4%	0.0%	N/A	N/A
102A Recycle Closet	+	35.5%	31.0%	32.2%	1.0:1	1.2:1
102B Layout Storage	+	32.8%	37.8%	1.3%	3.0:1	3.1:1
102C Recycle Storage 2	+	32.8%	37.8%	1.3%	3.0:1	3.1:1
102D Recycle Storage 3	+	32.8%	37.8%	1.3%	3.0:1	3.1:1
102E Recycle Storage 4	+	32.8%	37.8%	1.3%	3.0:1	3.1:1
102F Recycle Storage 5	+	32.8%	37.8%	1.3%	3.0:1	3.1:1
102G Recycle Storage 6	+	32.8%	37.8%	1.3%	3.0:1	3.1:1
102H Recycle Storage 7	+	32.8%	37.8%	1.3%	3.0:1	3.1:1
102I Recycle Storage 8	+	32.8%	37.8%	1.3%	3.0:1	3.1:1
102J Recycle Storage 9	+	32.8%	37.8%	1.3%	3.0:1	3.1:1
102K Recycle Storage 10	+	32.8%	37.8%	1.3%	3.0:1	3.1:1
102L Recycle Storage 11	+	32.8%	37.8%	1.3%	3.0:1	3.1:1
102M Recycle Storage 12	+	32.8%	37.8%	1.3%	3.0:1	3.1:1
102N Recycle Storage 13	+	32.8%	37.8%	1.3%	3.0:1	3.1:1
102O Recycle Storage 14	+	32.8%	37.8%	1.3%	3.0:1	3.1:1
102P Recycle Storage 15	+	32.8%	37.8%	1.3%	3.0:1	3.1:1
102Q Recycle Storage 16	+	32.8%	37.8%	1.3%	3.0:1	3.1:1
102R Recycle Storage 17	+	32.8%	37.8%	1.3%	3.0:1	3.1:1
102S Recycle Storage 18	+	32.8%	37.8%	1.3%	3.0:1	3.1:1
102T Recycle Storage 19	+	32.8%	37.8%	1.3%	3.0:1	3.1:1
102U Recycle Storage 20	+	32.8%	37.8%	1.3%	3.0:1	3.1:1
102V Recycle Storage 21	+	32.8%	37.8%	1.3%	3.0:1	3.1:1
102W Recycle Storage 22	+	32.8%	37.8%	1.3%	3.0:1	3.1:1
102X Recycle Storage 23	+	32.8%	37.8%	1.3%	3.0:1	3.1:1
102Y Recycle Storage 24	+	32.8%	37.8%	1.3%	3.0:1	3.1:1
102Z Recycle Storage 25	+	32.8%	37.8%	1.3%	3.0:1	3.1:1
102AA Recycle Storage 26	+	32.8%	37.8%	1.3%	3.0:1	3.1:1
102AB Recycle Storage 27	+	32.8%	37.8%	1.3%	3.0:1	3.1:1
102AC Recycle Storage 28	+	32.8%	37.8%	1.3%	3.0:1	3.1:1
102AD Recycle Storage 29	+	32.8%	37.8%	1.3%	3.0:1	3.1:1
102AE Recycle Storage 30	+	32.8%	37.8%	1.3%	3.0:1	3.1:1
102AF Recycle Storage 31	+	32.8%	37.8%	1.3%	3.0:1	3.1:1
102AG Recycle Storage 32	+	32.8%	37.8%	1.3%	3.0:1	3.1:1
102AH Recycle Storage 33	+	32.8%	37.8%	1.3%	3.0:1	3.1:1
102AI Recycle Storage 34						